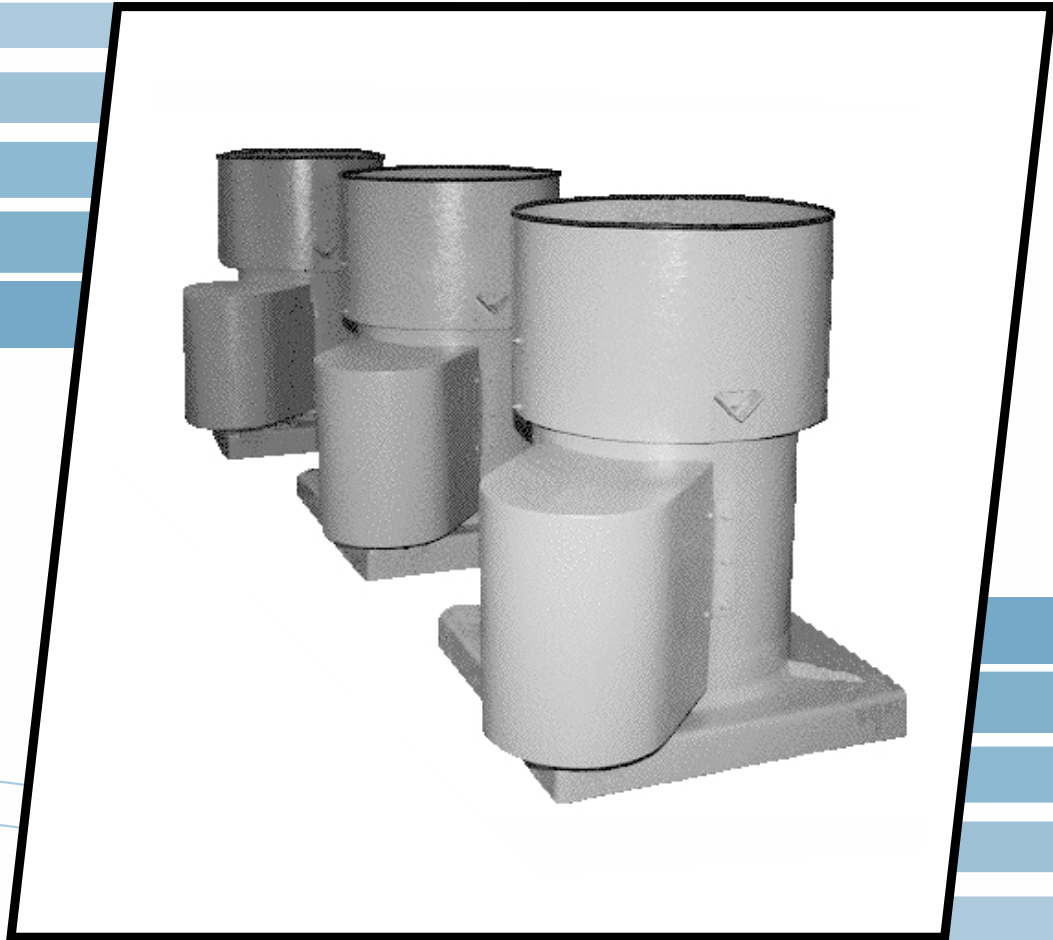




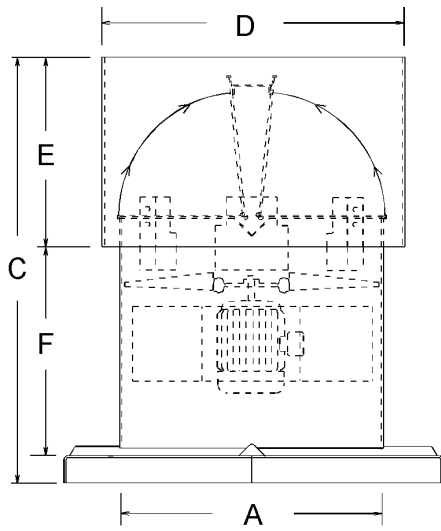
COMPOSITE FAN TECHNOLOGY

FRP *Upblast Fans*

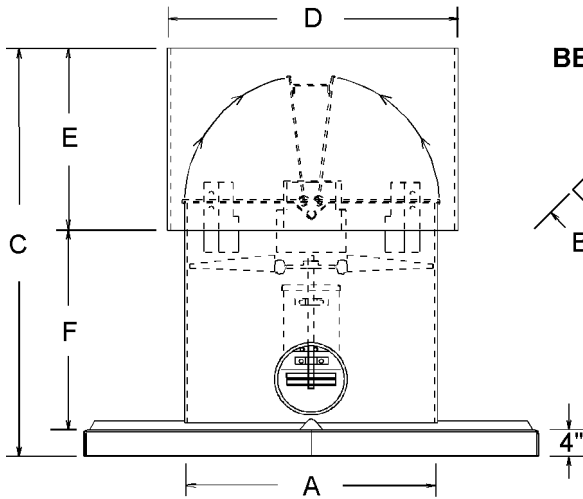
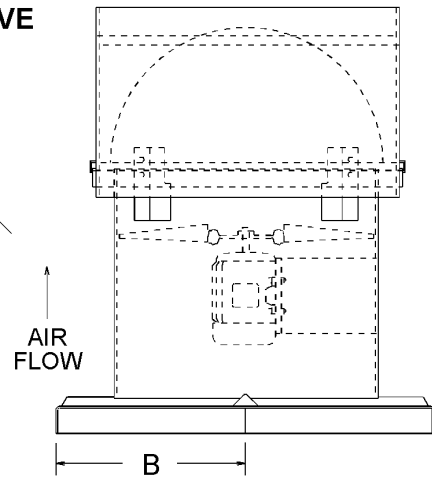
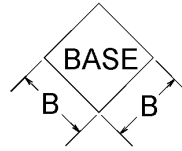


Corrosion Resistant • Rugged Construction

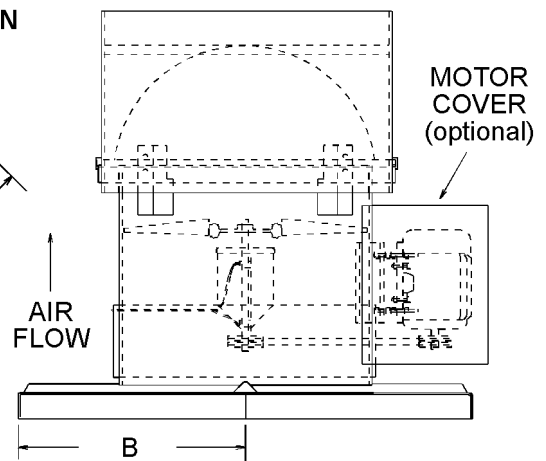
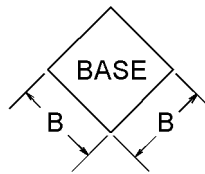
Fiberglass Upblast Fan Dimensions



DIRECT DRIVE



BELT DRIVEN



Direct Drive							
Prop Dia. A	B	C	D	E	F*	Stack Cap Thick	Housing & Curb Thick
14"	24	35-1/2	18-1/2	13	18-1/2	1/8	1/4
18"	28	36-1/2	22-1/2	14	18-1/2	3/16	1/4
20"	30	40	24-1/2	16	20	3/16	1/4
24"	34	44	28-1/2	18	22	3/16	1/4
30"	40	50	34-1/2	20	26	3/16	1/4
36"	46	58	40-7/8	24	30	3/16	1/4
42"	52	63	49-7/8	29	30	3/16	1/4
48"	58	66	56-1/4	32	30	1/4	5/16
54"	66	75	62-1/4	35	36	1/4	5/16
60"	72	78	68-1/4	38	36	1/4	5/16

*Dimension may vary with horsepower.

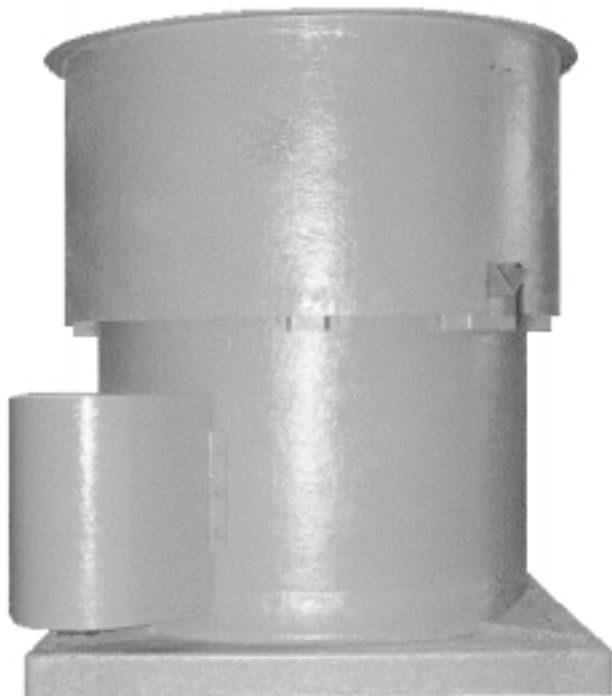
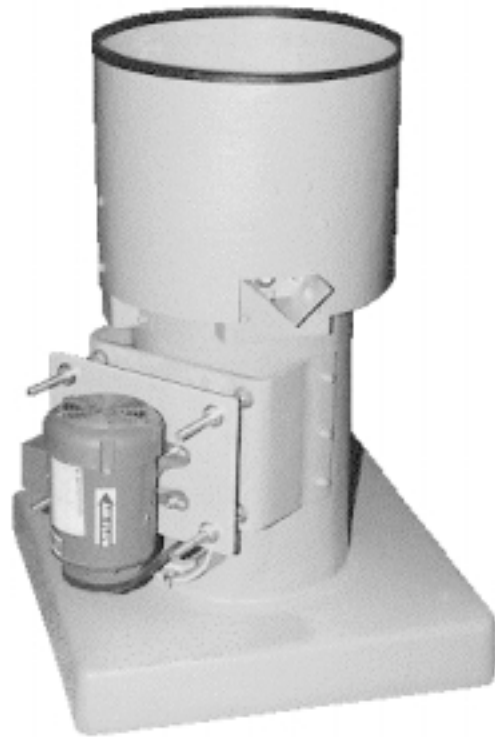
Belt Driven							
Prop Dia. A	B	C	D	E	F*	Stack Cap Thick	Housing & Curb Thick
14"	24	41	18-1/2	13	24	1/8	1/4
18"	28	44	22-1/2	14	26	3/16	1/4
20"	30	46	24-1/2	16	26	3/16	1/4
24"	34	48	28-1/2	18	26	3/16	1/4
30"	40	52	34-1/2	20	28	3/16	1/4
36"	46	58	40-7/8	24	30	3/16	1/4
42"	52	63	49-7/8	29	30	3/16	1/4
48"	58	68	56-1/4	32	32	1/4	5/16
54"	66	71	62-1/4	35	32	1/4	5/16
60"	72	78	68-1/4	38	36	1/4	5/16
72"	84	84	80-3/8	44	36	1/4	5/16

* Dimension may vary with horsepower.

Fiberglass Upblast Fan Features

Features

- **Sizes:** Model UBD and UBC: 14" - 60" direct drive, Model UBB: 14" - 72" belt driven.
- **Construction:** Fiberglass, Hetron 99P® polyester resin, Class 1 flame spread of 25 or less with UV inhibitor. Standard gray color.
- **Fan Housing:** FRP construction with flanged ends.
- **Stack Cap:** Fiberglass construction. May easily be removed for access to the fan wheel.
- **Curb Cap:** FRP construction. Integrally formed to fan housing and can be sized to fit existing curbs.
- **Fan Propeller:** Highly efficient, air foil and helical shaped fiberglass blades attached to a fiberglass hub. Bushing protected by a removable cap for easy maintenance.
- **Automatic Backdraft Dampers:** Fiberglass construction. When unit is on, dampers automatically swing up to the full-open position allowing free flow of exhaust air and fumes and automatically close when unit is turned off. Fiberglass encapsulated PVC damper rods rotate in polypropylene bearings.
- **Drive Tube:** FRP construction. Isolates drive components from the airstream on belt drive units. Sealed with a neoprene shaft seal.
- **Capacities:** Up to 50,000 CFM.
- **Pressures:** Up to 2-1/2" WG.



- **Bearings:** Heavy duty, cast iron, pillow block type with regreaseable fittings.
- **Shaft:** 304 stainless steel.
- **Motor Mount:** Fiberglass construction, positive screw adjustable for belt tensioning.
- **Motor:** Customer specified to suit requirements.
- **Lubrication:** Polyethylene lube lines extend from bearings to the exterior of the unit.
- **Motor Cover:** FRP construction. Protects motor while allowing fresh air to enter drive tube.

Accessories

- **Model UBC Isolated Design:** Direct drive unit with motor completely sealed from the airstream in a ventilated housing.
- **Special Materials:** Special resins, graphite impregnation with static grounding and synthetic veil are available to suit specific applications.
- **Hardware / Shaft:** 316 stainless steel or monel.
- **Disconnect Switch:** Non-fused, mounted to the exterior of the unit in a NEMA 3R enclosure. Can be factory pre-wired to motor.
- **Outlet Screen:** 1/2" polyethylene mesh.
- **Roof Curbs:** FRP construction.

Specifications

Direct Drive Upblast Fan

Furnish _____ each, size _____, Model (UBC, UBD) purchased from Composite Fan Technology.

Unit shall be constructed of Hetron 99P® polyester resin with a Class 1 flamespread of 25 or less.

The fan housing shall be of tube style construction. The curb cap shall be integrally molded to the fan housing. Housing and curb cap shall both have a minimum thickness of (1/4" for sizes 14" to 42" and 5/16" for sizes 48" to 60"). The stack cap shall be of minimum thickness (1/8" for size 14", 3/16" for sizes 18" to 42", 1/4" for sizes 48" to 60"). Butterfly type dampers shall pivot in polypropylene bearings.

Fan propeller is to be directly mounted to the motor shaft. Fiberglass blades shall have an air foil and helical design and attached to a fiberglass hub.

Motor mount shall be of solid fiberglass construction. All hardware shall be (304SS, 316SS, monel).

The fan shall have a capacity of _____ CFM at _____ inch(es) static pressure standard air and equipped with a _____ HP, _____ RPM, motor mounted out of the airstream. It shall be suitable for _____ volt, _____ phase, _____ cycle operation. Electrical connection motor leads are to be extended through conduit to the exterior of the unit to a junction box mounted to the fan housing. A motor with regreaseable fittings shall have lubrication lines extended to the exterior of the unit and mounted next to the junction box.

Available accessories include: graphite impregnation with static grounding, disconnect switch mounted and wired, polyethylene screen and FRP roof curb.

Belt Drive Upblast Fan

Furnish _____ each, size _____, Model UBB purchased from Composite Fan Technology.

Unit shall be constructed of Hetron 99P® polyester resin with a Class 1 flamespread of 25 or less.

The fan housing shall be of tube style construction. The curb cap shall be integrally molded to the fan housing. Housing and curb cap shall both have a minimum thickness of (1/4" for sizes 14" to 42" and 5/16" for sizes 48" to 72"). The stack cap shall be of minimum thickness (1/8" for size 14", 3/16" for sizes 18" to 42", 1/4" for sizes 48" to 72"). Butterfly type dampers shall pivot in polypropylene bearings.

The fan shall have a capacity of _____ CFM at _____ inch(es) static pressure standard air and equipped with a _____ HP, _____ RPM, motor mounted out of the airstream. It shall be suitable for _____ volt, _____ phase, _____ cycle operation.

Bearings, shaft and drive shall be protected from the airstream by a fiberglass drive tube and mounted on fiberglass supports. The bearings shall be self-aligning heavy duty ball or roller type and designed for a minimum average life of 50,000 hours. Polyethylene lubrication lines shall extend to unit exterior and include grease fittings. The fan shaft shall be of (304, 316) stainless steel with a shaft seal. Unit shall be equipped with a (fixed, adjustable) v-belt drive selected with a 1.5 service factor.

Motor and drive shall be protected by a fiberglass motor cover. All hardware shall be (304SS, 316SS, monel).

Fiberglass propeller blades shall have an air foil and helical design and attached to a fiberglass hub.

Available accessories include: graphite impregnation with static grounding, disconnect switch mounted and wired, polyethylene screen and FRP roof curb.

Bulletin 103 Feb. 1998



REPRESENTATIVE

230 South Niagara Street • Lockport, NY 14094 • Phone (800) 432-5513 • (716) 434-5513
Fax (716) 439-4010 • Web www.metalcladding.com/cft.html • Email info@metalcladding.com

Division of Metal-Cladding Inc. Member of AMCA.

Serving the air handling needs of industry for over 30 years.