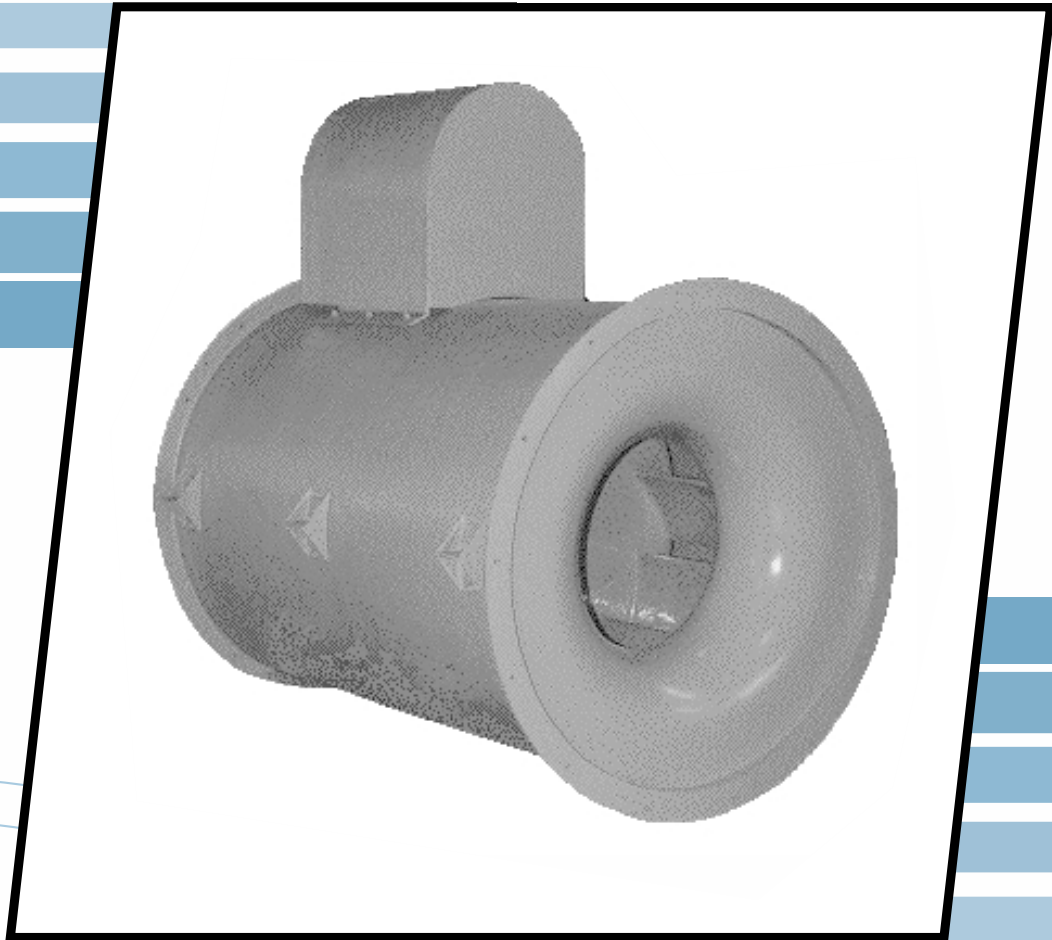




COMPOSITE FAN TECHNOLOGY

FRP *Inline Centrifugal*

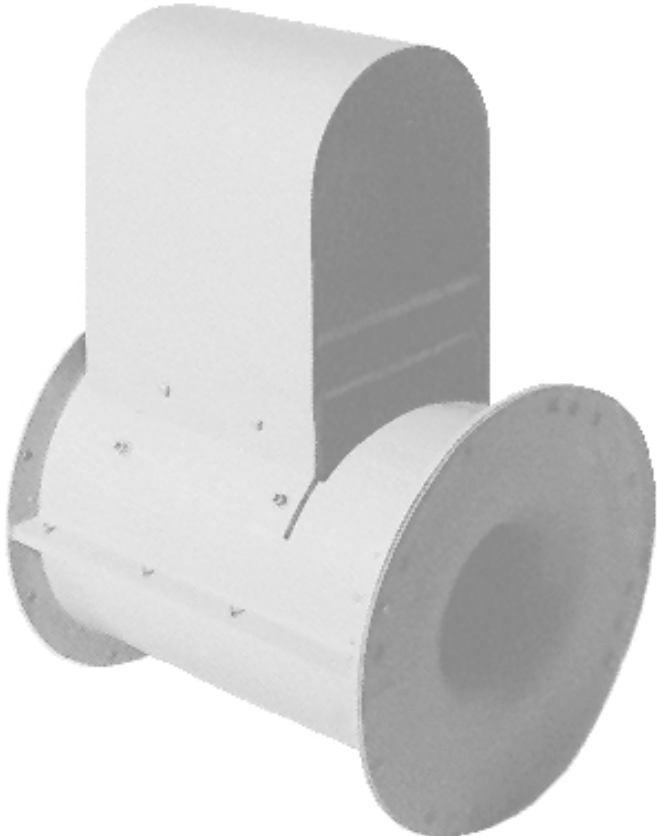
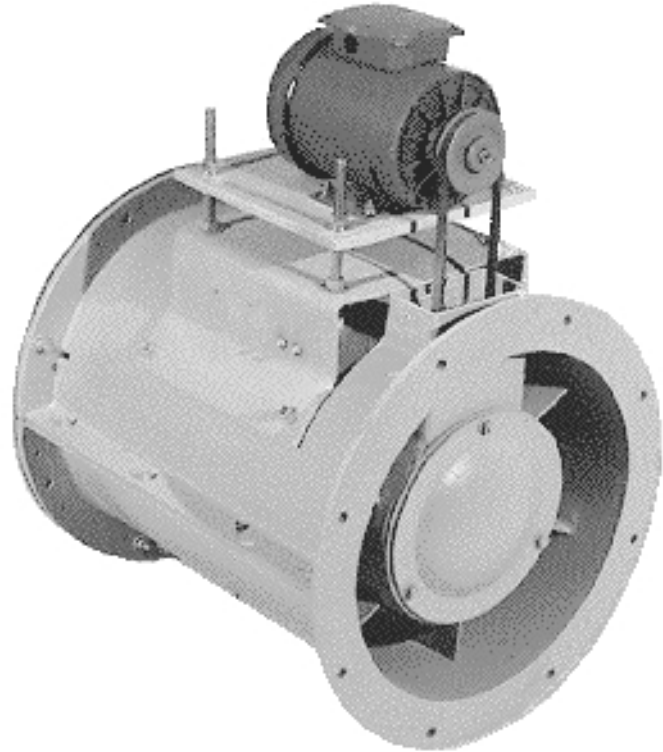


Corrosion Resistant • Rugged Construction

Inline Centrifugal Features

Features

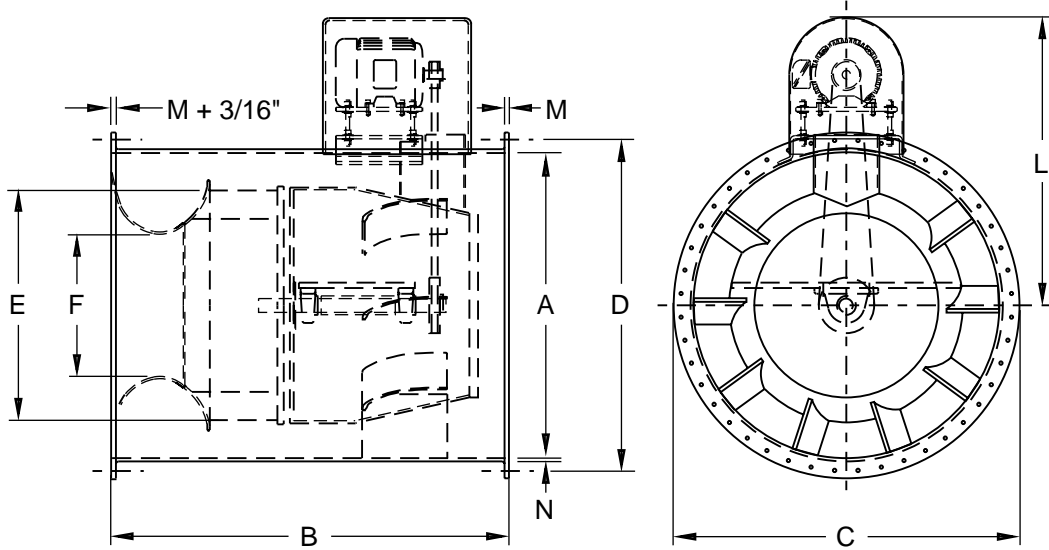
- **Model ILC Sizes:** 12" - 36".
- **Housing:** Fiberglass, Hetrion 99P® polyester resin, Class 1 flame spread of 25. Standard gray color.
- **Wheel:** Backward inclined non-overloading design. Fiberglass, Hetrion FR992® vinyl ester resin, Class 1 flame spread of 25. Metal hub insert is fiberglass encapsulated. Taperlock bushing protected by a fiberglass cap. Final resin rich coat is applied for increased corrosion resistance.
- **Shaft:** 304 stainless steel. A fiberglass sleeve encapsulates the shaft where it enters the housing and includes a shaft seal.
- **Hardware:** 304 stainless steel. Fiberglass encapsulated where exposed to the airstream.
- **Inlet/Outlet:** Flanged for duct attachment.
- **Motor Mount:** FRP construction, positive screw adjustable for belt tensioning.
- **Motor Cover:** FRP construction, provided as standard on drive arrangement 10 fans.
- **Drive:** Fixed sheave, 1.5 service factor V-belts.
- **Capacities:** Up to 35,000 CFM.
- **Pressures:** Up to 10" WG.



Accessories

- **Special Materials:** Special resins, graphite impregnation with static grounding lugs and synthetic veil are available to suit specific applications.
- **Shaft:** 304 or 316 stainless steel.
- **Hardware:** 316 stainless steel.
- **Access Door:** Gasketed door for access to housing interior.
- **Flanged Inlet:** For flanged attachment to inlet duct.
- **Inlet Vane Dampers:** FRP construction with manual quadrant for control of air flow.
- **Mounting Supports:** Fiberglass clips and mounting legs for vertical and horizontal mounting arrangements.
- **Roof Mount:** FRP curb caps, stack caps and intake/exhaust hoods are available.
- **Vibration Isolators:** Rubber-in-shear or spring type.

Inline Centrifugal Dimensions



	12"	15"	18"	22"	24"	27"	30"	33"	36"
A	16-7/8	20-1/2	24-1/2	29-3/4	32-1/2	37	40-3/4	44-7/8	49
B	23-5/8	30	36-1/16	43-7/8	48-1/16	53-11/16	60	66	72
C	22	24-7/8	28-7/8	34-1/8	36-7/8	41-3/8	47-1/8	51-1/2	55-3/8
D	20	23-1/2	27-1/2	32-3/4	35-1/2	40	44-3/4	48-7/8	53
E	12-1/4	15-5/16	18-3/8	22-7/16	24-1/2	27-9/16	30-5/8	33-11/16	36-3/4
F	7-9/16	9-1/2	11-3/8	13-15/16	15-3/16	17-1/16	19	20-7/8	22-3/4
L	*	*	*	*	*	*	*	*	*
M	3/8	1/2	1/2	1/2	1/2	1/2	5/8	5/8	5/8
N	1/4	5/16	5/16	5/16	3/8	3/8	3/8	1/2	1/2
P	8	20	20	24	24	24	36	36	36
Q	7/16	7/16	7/16	7/16	7/16	7/16	7/16	7/16	9/16

*Dimension varies with horsepower.

Specifications

Furnish _____ each, size _____, Model ILC purchased from Composite Fan Technology

Fan shall be suitable for Class II operation.

Housing shall be constructed of Hetron 99P® polyester resin with a Class 1 flamespread of 25 or less.

Fan wheel shall be constructed of fiberglass using Hetron 992 FR® vinyl ester resin and attached to shaft by a taperlock bushing. The bushing shall be protected by a fiberglass cover. Fan shaft shall be of 304 stainless steel with a fiberglass sleeve where the shaft enters the fan housing and a shaft seal.

The fan shall have a capacity of _____ CFM at _____ inch(es) static pressure standard air and equipped with a _____ HP, _____ RPM, motor. It shall be suitable for

_____ volt, _____ phase, _____ cycle operation.

The bearings shall be self-aligning pillow block type. Unit shall be equipped with a (fixed, adjustable) v-belt drive selected with a 1.5 service factor.

Motor and drive shall be protected by a fiberglass motor cover.

All hardware shall be (304SS, 316SS).

Available accessories include: graphite impregnation with static grounding, surface veil, gasketed access door, FRP flanged inlet, fiberglass manual control outlet damper, FRP inlet vane dampers with manual quadrant, fiberglass inlet box, FRP curb cap, fiberglass stack cap, FRP (intake, exhaust) hood, vibration isolators (rubber-in-shear, spring type) .

Bulletin 107 Feb. 1998



230 South Niagara Street • Lockport, NY 14094 • Phone (800) 432-5513 • (716) 434-5513
Fax (716) 439-4010 • Web www.metalcladding.com/cft.html • Email info@metalcladding.com

Division of Metal-Cladding Inc. Member of AMCA.

Serving the air handling needs of industry for over 30 years.

REPRESENTATIVE