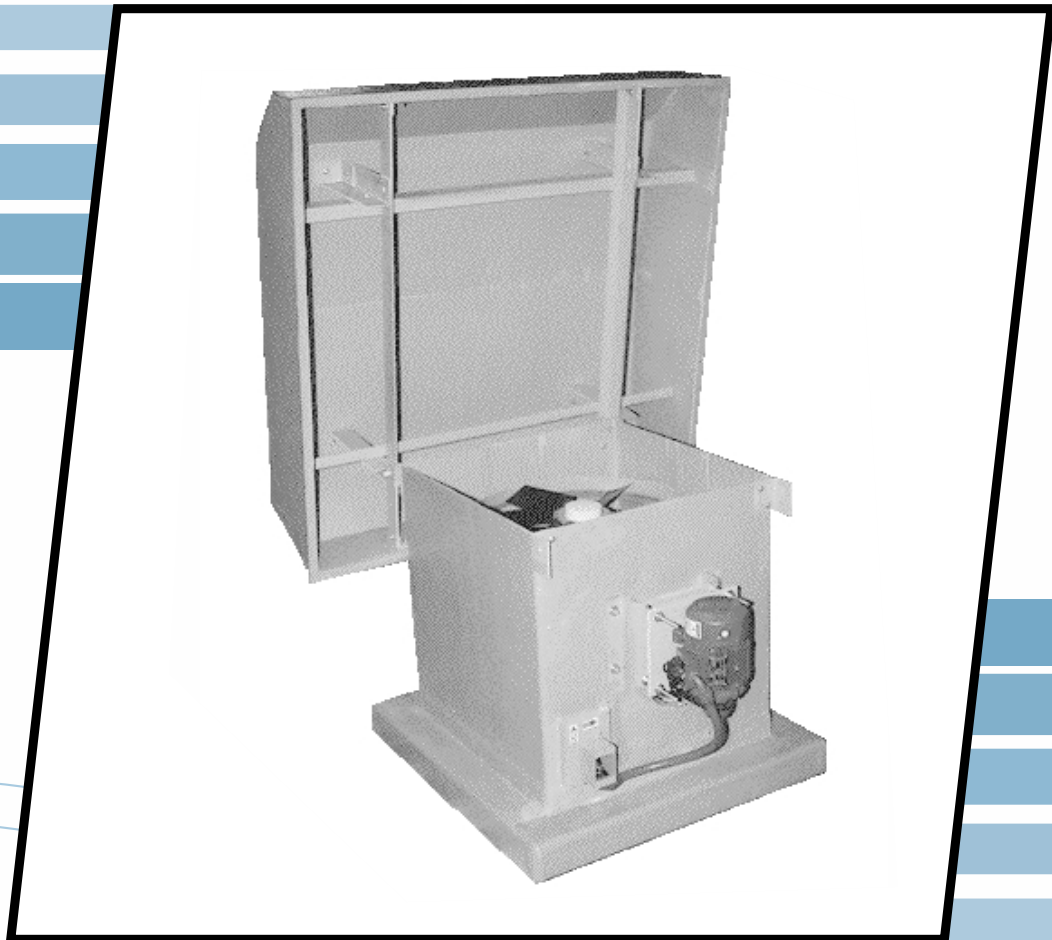




COMPOSITE FAN TECHNOLOGY

FRP *Hooded Exhaust/Supply Fan*

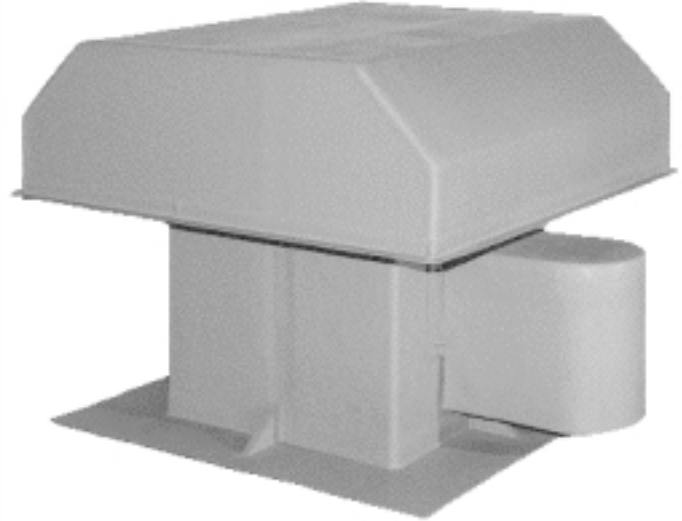


Corrosion Resistant • Rugged Construction

Fiberglass Hooded Fan Features

Features

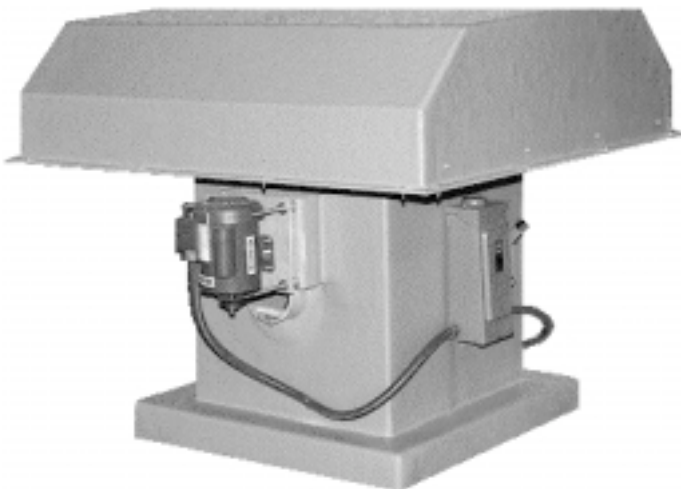
- **Sizes: Model HD and HC:** 12" - 60" direct drive, **Model HB:** 12" - 72" belt driven.
- **Model Designations:** HDE, HCE, HBE - exhaust, HDS, HCS, HBS - supply.
- **Construction:** Fiberglass, Hetron 99P® polyester resin, Class 1 flame spread of 25 or less with UV inhibitor. Standard gray color.
- **Stack:** FRP construction.
- **Venturi:** Fan propeller operates in a fiberglass venturi orifice molded into the stack, increasing air flow efficiency.
- **Fan Propeller:** Highly efficient, air foil and helical shaped fiberglass reinforced blades attached to a fiberglass hub. Bushing protected by a removable cap for easy maintenance.
- **Curb Cap:** FRP construction, integrally formed to fan housing. Size can be adapted to fit existing curbs.
- **Hood:** Fiberglass construction, properly sized as to minimize restriction to air flow and prevent water entrainment on supply applications. All structural support members are solid fiberglass.
- **Drive Tube:** FRP construction. Isolates drive components from the airstream on belt drive units. Sealed with a neoprene shaft seal.
- **Bearings:** Heavy duty, cast iron, pillow block-type with regreaseable fittings.
- **Shaft:** 304 stainless steel.
- **Capacities:** Up to 60,000 CFM.
- **Pressures:** Up to 2" WG.



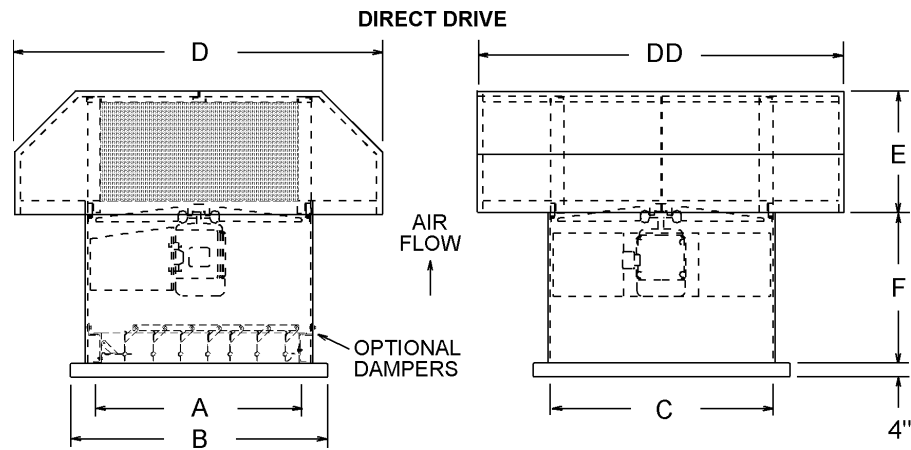
- **Motor Mount:** Fiberglass construction, positive screw adjustable for belt tensioning.
- **Motor:** Customer specified to suit requirements.
- **Lubrication:** Polyethylene lube lines extend from bearings to the exterior of the unit.
- **Motor Cover:** FRP construction.

Accessories

- **Model HC Isolated Design:** Direct drive unit with motor completely sealed from the airstream in a ventilated housing.
- **Reversible:** The fan wheel can be assembled to provide reversible air flow for all-season ventilation.
- **Special Materials:** Special resins, graphite impregnation with static grounding and synthetic veil are available to suit specific applications.
- **Filtered Hoods:** Various filters may be mounted in the hood to filter airflow.
- **Dampers:** Heavy duty FRP construction, mounted in a slide-out tray in the stack for easy maintenance. A 115v motor operator is available, mounted in a fiberglass enclosure out of the airstream.
- **Screen:** 1/2" polyethylene mesh and stainless steel screens are available.
- **Hardware:** 316 stainless steel or monel.
- **Disconnect Switch:** Non-fused, mounted to the exterior of the unit in NEMA 3R enclosure. Can be factory pre-wired.
- **Access Doors:** FRP bolted access door with seals.
- **Roof Curbs:** FRP construction.



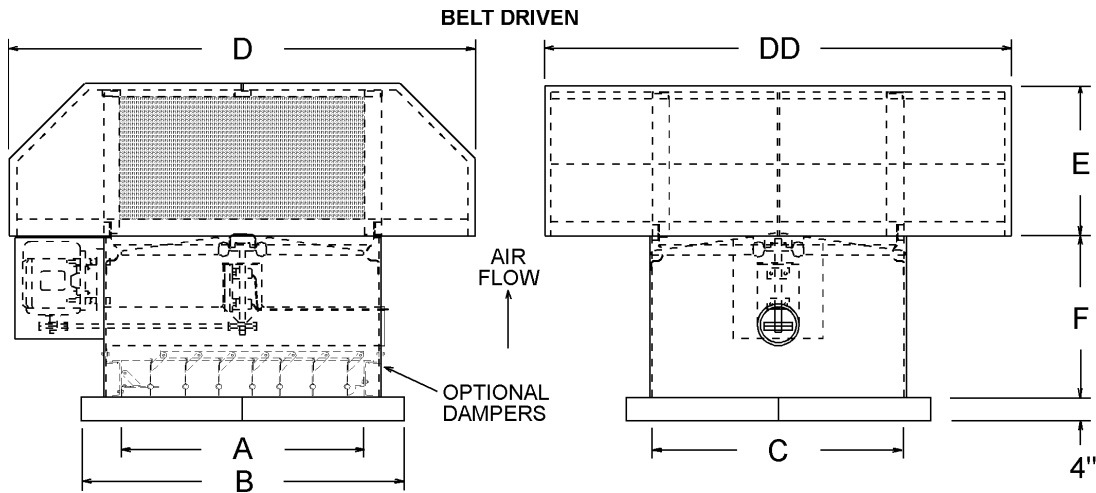
Fiberglass Hooded Fan Dimensions



Direct Drive								
Prop Dia. A	B	C	D	DD	E	F*	Hood Thick.	Stack/Base Thick.
20"	34	24	42	42	15	30	1/8	1/4
24"	38	28	52	52	15	30	1/8	1/4
30"	46	36	62	62	15	30	1/8	1/4
36"	52	42	72	72	17	36	1/8	1/4
42"	58	48	82	82	20	36	3/16	1/4
48"	64	54	92	92	24	36	3/16	1/4
54"	70	60	120	92	26	40	3/16	5/16
60"	76	66	120	96	28	48	3/16	5/16

*Dimension may vary with horsepower.

Hood sizes may vary with air requirements.



Belt Driven								
Prop Dia. A	B	C	D	DD	E	F*	Hood Thick.	Stack/Base Thick.
20"	34	24	42	42	15	30	1/8	1/4
24"	38	28	52	52	15	30	1/8	1/4
30"	46	36	62	62	15	30	1/8	1/4
36"	52	42	72	72	17	36	1/8	1/4
42"	58	48	82	82	20	36	3/16	1/4
48"	64	54	92	92	24	36	3/16	1/4
54"	70	60	120	92	26	40	3/16	5/16
60"	76	66	120	96	28	48	3/16	5/16
72"	88	78	120	120	30	48	3/16	5/16

*Dimension may vary with horsepower.

Hood sizes may vary with air requirements.

Specifications

Direct Drive Hooded Fan

Furnish _____ each, size _____, Model (HC, HD) purchased from Composite Fan Technology.

Unit shall be constructed of Hetron 99P® polyester resin with a Class 1 flamespread of 25 or less.

The stack shall be minimum thickness of (1/4" for sizes 20" to 48", 5/16" for size 54" to 60"). Fiberglass venturi shall be mounted in fan stack and arranged for either exhaust or supply operation. Fiberglass hood shall contain structural fiberglass hood supports. Motor mount shall be of FRP construction.

Fan propeller is to be directly mounted to the motor shaft. Fiberglass blades shall have an air foil and helical design and attached to a fiberglass hub.

The fan shall have a capacity of _____ CFM at _____ inch(es) static pressure standard air and equipped with a _____ HP, _____ RPM, motor mounted

out of the airstream. It shall be suitable for _____ volt, _____ phase, _____ cycle operation. Electrical connection motor leads are to be extended through conduit to the exterior of the unit to a junction box mounted to the fan housing. A motor with regreaseable fittings shall have lubrication lines extended to the exterior of the unit and mounted next to the junction box.

All hardware shall be (304SS, 316SS, monel).

Available accessories include: reversible air flow design, graphite impregnation with static grounding, synthetic veil, filters, fiberglass dampers shall be (auto backdraft, 115v motor actuated with motor mounted out of airstream in an FRP enclosure) and shall be mounted in the stack and accessed by slide-out tray, 1/2" polyethylene mesh mounted in removable PVC frames, disconnect switch mounted and wired, neoprene sealed access doors, FRP roof curb.

Belt Drive Hooded Fan

Furnish _____ each, size _____, Model HB purchased from Composite Fan Technology.

Unit shall be constructed of Hetron 99P® polyester resin with a Class 1 flamespread of 25 or less.

The fan stack shall be minimum thickness of (1/4" for sizes 20" to 48", 5/16" for size 54" to 72"). Fiberglass venturi shall be mounted in fan stack and arranged for either exhaust or supply operation. Fiberglass hood shall contain structural fiberglass hood supports. Motor mount shall be of fiberglass construction.

The fan shall have a capacity of _____ CFM at _____ inch(es) static pressure standard air and equipped with a _____ HP, _____ RPM, motor mounted out of the airstream It shall be suitable for _____ volt, _____ phase, _____ cycle operation.

Bearings, shaft and drive shall be protected from the airstream by a fiberglass drive tube and mounted on fiberglass supports. The bearings shall be self-aligning

heavy duty ball or roller type. Polyethylene lubrication lines shall extend to unit exterior and include grease fittings. The fan shaft shall be of (304, 316) stainless steel with a polypropylene shaft seal. Unit shall be equipped with a (fixed, adjustable) v-belt drive selected with a 1.5 service factor. Motor and drive shall be protected by a fiberglass motor cover.

Fiberglass propeller blades shall have an air foil and helical design and attached to a fiberglass hub.

All hardware shall be (304SS, 316SS, monel).

Available accessories include: reversible air flow design, graphite impregnation with static grounding, filters, fiberglass dampers shall be (auto backdraft, _____ motor actuated with motor mounted out of airstream in an FRP enclosure) and shall be mounted in the stack and accessed by slide-out tray, 1/2" polyethylene mesh mounted in removable PVC frames, disconnect switch mounted and wired, neoprene sealed access doors, FRP roof curb.

Bulletin 104 Feb. 1998



230 South Niagara Street • Lockport, NY 14094 • Phone (800) 432-5513 • (716) 434-5513
Fax (716) 439-4010 • Web www.metalcladding.com/cft.html • Email info@metalcladding.com

Division of Metal-Cladding Inc. Member of AMCA.

Serving the air handling needs of industry for over 30 years.

REPRESENTATIVE